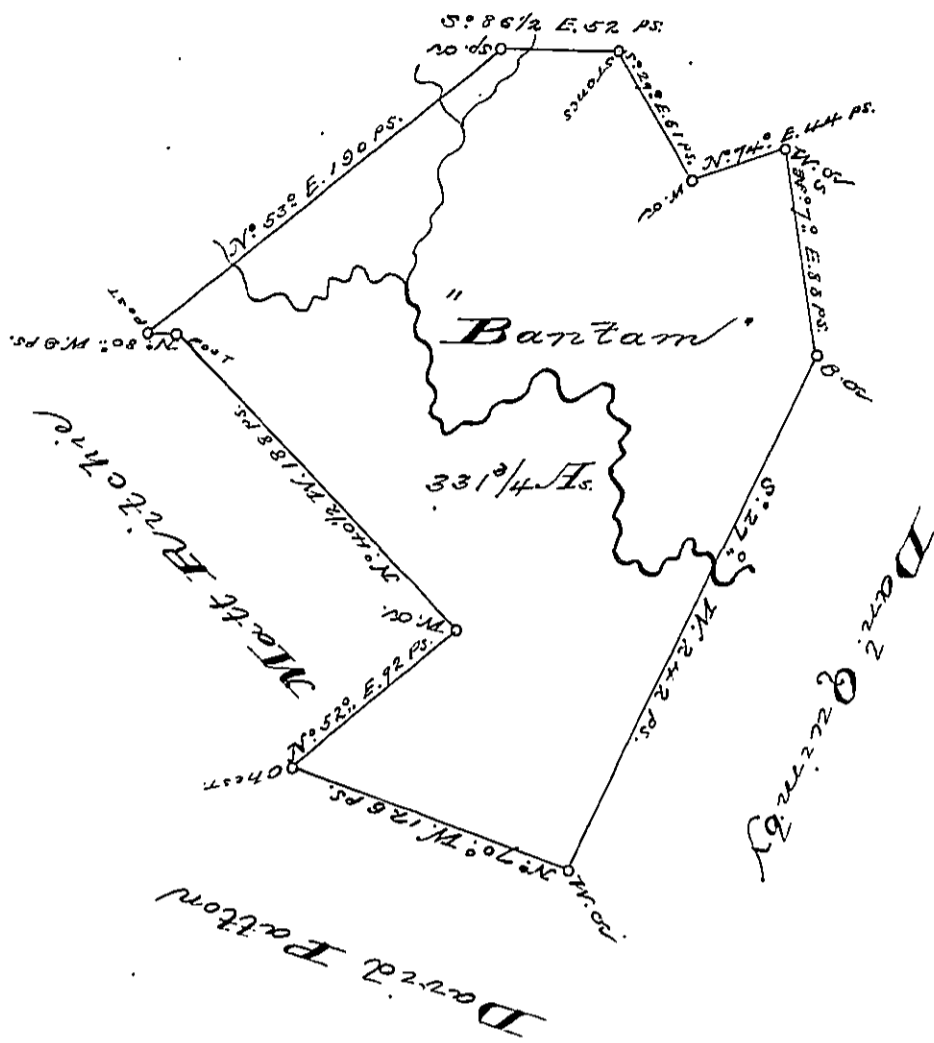


Alex^r. M^r. Cullough



A Draught of a Survey called "Bantam" Situate on the Waters of Travis Creek in Washington County containing 331 ³/₄ Acs. and the usual Allow^{ce} for Roads &c. executed y^e 2^d of Novem^r. 1788 in Pursuance of a Warrant granted to Abm. Van Middlewark for 330 Acs. dated Nov. y^e 18th 1785 and assigned on y^e back to W^m. Wilson

Sam^l. Brodhead Esq^r
S^r. G^r.

Jessey Nevill } S^r
Math^w. Ritchie }

IN TESTIMONY that the above is a copy of the original remaining on file in the Department of Internal Affairs of Pennsylvania, made conformably to an Act of Assembly approved the 16th day of February, 1833, I have hereunto set my Hand and caused the Seal of said Department to be affixed at Harrisburg, this

— sixteenth — day of — February — 1892

Thos. J. Stewart
Secretary of Internal Affairs